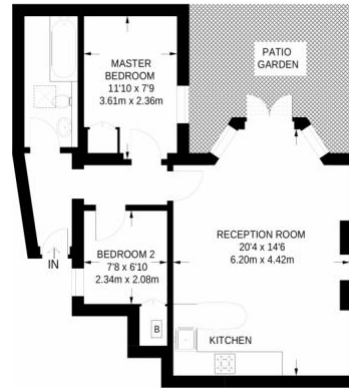


NEWLY AVAILABLE TO LET: 2 Bedroom Garden Flat In a Period Building in Shepherds Bush, W14

- Two bedrooms
- Open plan kitchen, diner and reception
- Private garden
- Private entrance
- Less than 5 minute walk to Shepherds Bush station
- Walking distance to Westfield
- Fully furnished



AVAILABLE FROM 11TH JUNE
Call now to view: 020 3371 1460



Subject to IMA Terms of Business. Subject to Contract
All prices and figures correct as of date displayed below
Registered in England and Wales No: 7459553
Property Ombudsman Reg No: D7217
ICO Reg No: ZA042872